

SKŁADANE KOSZULKI "NA DWA"



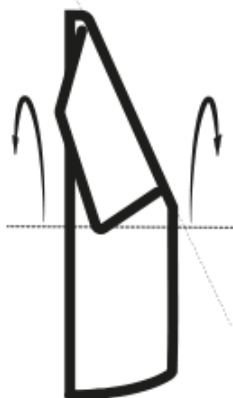
1



2



3

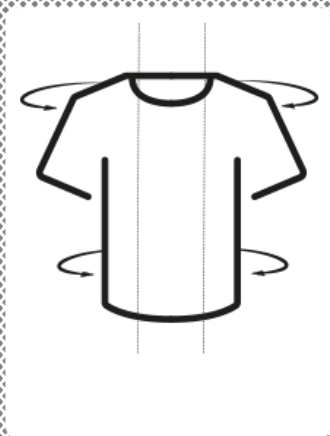


4

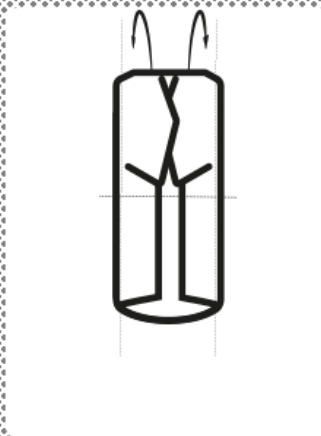


5

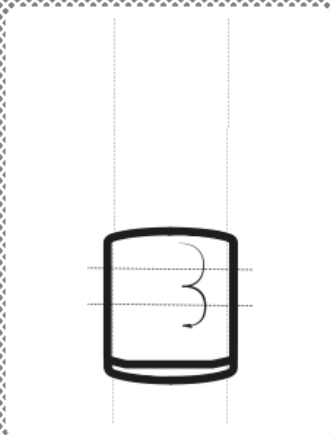
SKŁADANIE METODĄ "KONMARI"



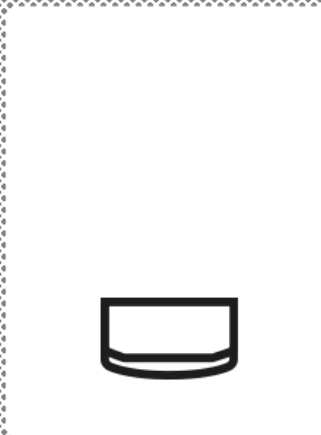
1



2

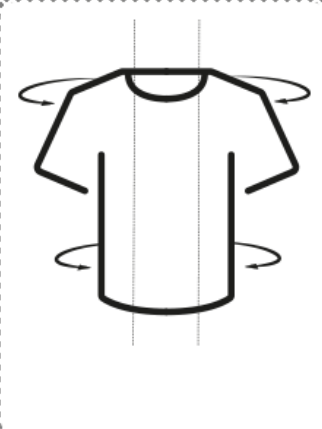


3



4

SKŁADANIE KOSZULKI W RULON



1



2



3



4

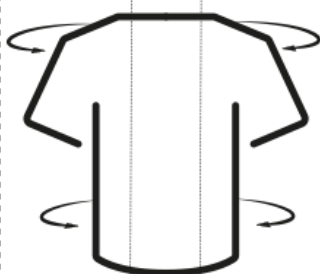


5

SKŁADANIE METODĄ KLASYCZNA



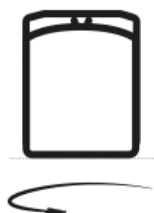
1



2



3



4



5

SKŁADANIE ZA POMOCĄ PRZYRZĄDÓW

